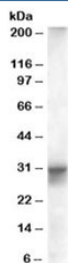


## FHL1 Antibody [FHL1B/SLIMMER] (R33359)

Catalog No.	Formulation	Size
R33359-100UG	0.5 mg/ml in 1X TBS, pH7.3, with 0.5% BSA (US sourced) and 0.02% sodium azide	100 ug

[Bulk quote request](#)

Availability	1-3 business days
Species Reactivity	Human
Predicted Reactivity	Dog, Mouse
Format	Antigen affinity purified
Clonality	Polyclonal (goat origin)
Isotype	Goat Ig
Purity	Antigen affinity
UniProt	Q13642
Gene ID	2273
Applications	Western Blot : 0.01-0.1ug/ml ELISA (peptide) LOD : 1:128000
Limitations	This FHL1 antibody is available for research use only.



Western blot testing of human heart lysate with FHL1 antibody at 0.01ug/ml.  
Predicted/observed molecular weight: ~36/30-36kDa.

### Description

Additional name(s) for this target protein: Four and a half LIM domains 1, Slimmer, FHL1B (FHL1 isoform B)

### Application Notes

Optimal dilution of the FHL1 antibody should be determined by the researcher.

## Immunogen

Amino acids CTVSRVSHPVSKARK were used as the immunogen for this FHL1 antibody (AAC72886.1, 323AA). This Ab is specific for the B isoform (FHL1B) of the protein.

## Storage

Aliquot and store the FHL1 antibody at -20oC.